

PHILIPS

Vidéoprojecteur

NEOPIX PRIME NPX540/INT

MANUEL D'UTILISATION



Besoin d'aide ?
Rendez-vous sur votre communauté <https://sav.darty.com>



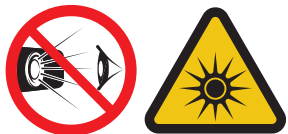
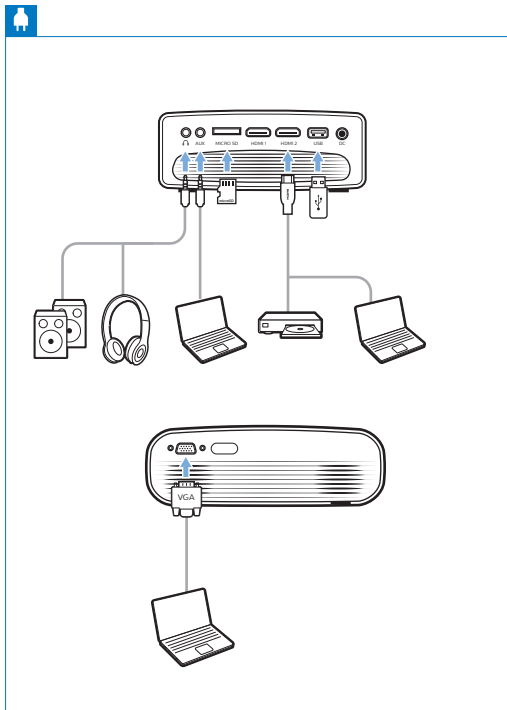


Screeneo Innovation SA
Route de Lully 5C
1131 - Tolochenaz - Switzerland
www.philips.com/welcome
philips.projector.eu@screeneo.com

Philips and the Philips Shield Emblem are registered trademarks of Koninklijke Philips N.V. used under license. Screeneo Innovation SA is the warrantor in relation to the product with which this booklet was packaged.

2019 © Screeneo Innovation SA
All right reserved

FCC ID 2ASRT-NPX540
This device complies with part 15 of the FCC Rules. Operation is subject to the following two conditions: (1) This device may not cause harmful interference, and (2) this device must accept any interference received, including interference that may cause undesired operation.



PHILIPS

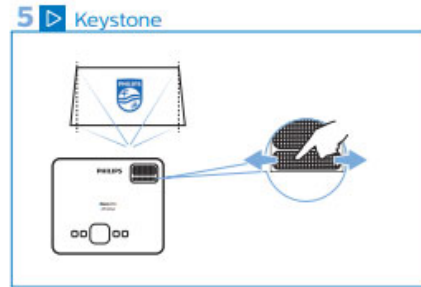
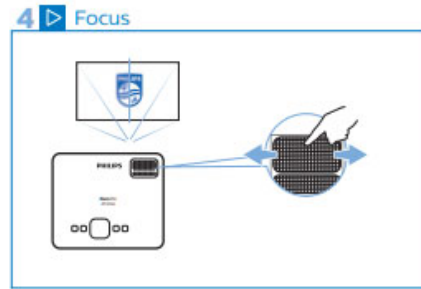
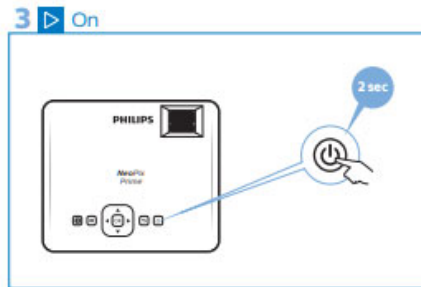
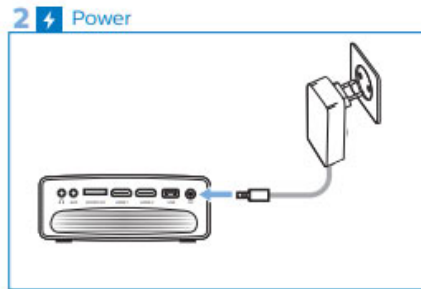
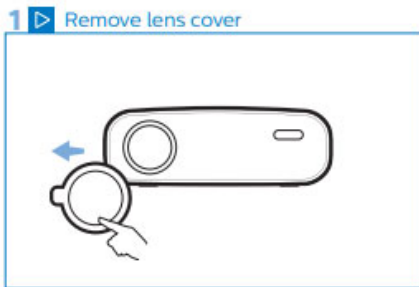
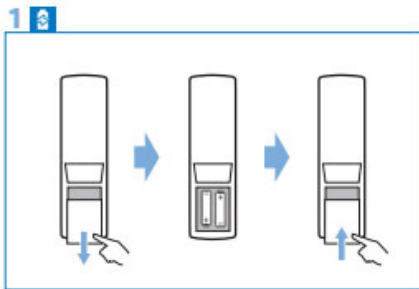
NeoPix Prime

Mini projector

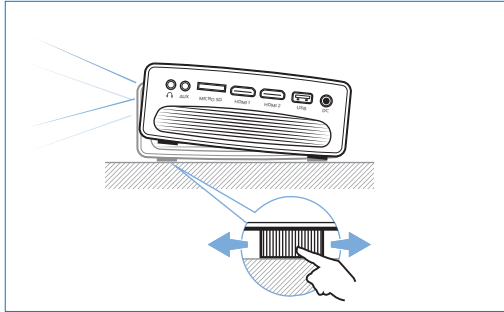


Quick Start Guide

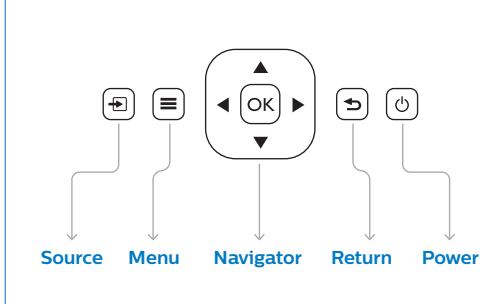
Register your product for further support and download the full user manual at: www.philips.com/support



6 ▶ Adjustment knob



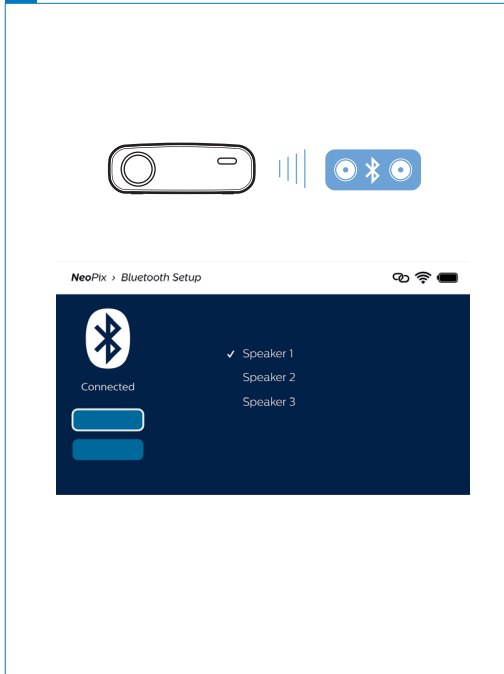
7 ▶ Keys



Wireless screen mirroring



Bluetooth speaker



Wireless screen mirroring

