



MARQUE: D<=@=DG

REFERENCE: <L, &%\$#&&

CODIC: (\$\$* +&\$

Service
Service
Service



Philips Consumer Lifestyle

Service Manual

SERVICE POLICY

Warranty for this product is 2 years after purchase. The product will be serviced for 3 years after End of Life.

PRODUCT INFORMATION

Using

AirFloss is designed to be used on the outside of the teeth. Place the tip between teeth and apply gentle pressure. Press activation button to deliver a burst of air and water. Glide the guidance tip along the gum line until you feel it settle between the next two teeth. Press the activation button again and repeat for all spaces including behind your back teeth. Press power on/off button to turn power off after use.

Charging

Charge for 24 hours before first use. Charge indicator flashes green until fully charged. Rapid yellow flashing indicates charge is extremely low (fewer than 3 uses left). AirFloss is designed to last 2 weeks (or 14 uses) on a single charge. The charger that comes in the finished good configuration is not compatible with previous Sonicare toothbrush models. The service charger is compatible with both previous Sonicare toothbrush models as well as the AirFloss handle. The AirFloss handle is compatible with previous FlexCare chargers but not DiamondClean or e-series.

Low Battery Warning - Yellow Indicator Flashes when Approximately 90 Activations Remain (90 Activations = 3 Uses)

AirFloss

HX8111, AirFloss Retail
HX8181, AirFloss Dental Prof
HX8141, AirFloss Pro Disp
HX8140, AirFloss Handle

AirFloss 1.5

HX8211, AirFloss Retail
HX8241, AirFloss Dental Prof
HX8281, AirFloss Pro Disp
HX8240, AirFloss 1.5 Handle

Full Battery Indication - Solid Green light appears after appliance is fully charged.

Note: After 4 minutes the green light will turn off to conserve battery life.

Attaching the Nozzle and filling the reservoir

attach nozzle and fill reservoir with water or mouthwash as shown below.

Priming the device

After filling the reservoir, press the power on/off button to turn on, then press the activation button approximately 6 times or until spray is produced.

Cleaning - Remove the nozzle and rinse with water. Use a cotton-tipped swab to wipe down the reservoir, if desired. Avoid getting foreign objects inside. The use of cleaning agents inside the device is not recommended. Do not clean in the dishwasher or any other sanitizing devices.

Storing

If AirFloss will not be used for an extended period of time, empty water from reservoir, press activation button until no spray is produced, unplug the charger, clean the product, and store it in a cool, dry place away from direct sunlight.

Service

Replace the nozzle every 6 months for optimal results.

HX8111, HX8181, HX8141, HX8140 HX8211, HX8241, HX8281, HX8240

SAFETY INFORMATION

- Consult your dental professional before you use this product if you have had oral or gum surgery in the previous two (2) months.
- Contact your dental professional if excessive bleeding occurs after using this product or bleeding continues to occur after one (1) week of use.
- Discontinue use of this product and contact a physician/dentist if discomfort or pain is experienced.
- This product complies with the safety standards for electromagnetic devices. If you have a pacemaker or other implanted device, contact your physician or the device manufacturer prior to use.

- Consult your physician if you have other medical concerns.

To reduce the risk of burns, electrocution, fire, or physical injury:

- DO NOT use alcohol or other cleaning fluids in the reservoir as it may be an ingestion hazard.
- DO NOT use attachments other than those recommended by the manufacturer.
- DO NOT plug the charger into an outlet with a voltage other than specified on the bottom of the charger.
This product is designed to operate within a range of 100 to 240 volts. Voltage converters DO NOT guarantee voltage compatibility
- DO NOT use hot water so as to avoid physical injury.
- DO NOT use the charger outdoors.
- DO NOT drop
- Never force the plug into an outlet; if the plug does not easily fit into the outlet, discontinue use.
- Keep the cord away from heated surfaces.
- Discontinue use if the nozzle, body, or charger body / cord appear damaged in any way. Refer to “Warranty and Service” for service or repair.
- This product contains no user-serviceable parts. Refer to “Warranty and Service” if AirFloss no longer works properly or needs repair.
- Use this product only for its intended use as described in this document or as recommended by your dental professional.
- This product is not intended for use by persons (including children) with reduced physical, sensory, or mental capabilities, or lack of experience and knowledge, unless they have been given supervision or instruction concerning use of the appliance by a person responsible for their safety.
- Children should be supervised to ensure that they do not play with the appliance.
- AirFloss is a personal care device and is not intended for use on multiple patients in a dental office or institution.
- Do not direct the spray under the tongue or into the ear, nose, eye, or other sensitive areas. See “Using AirFloss”

4235-006-32611-671_13-12-18
(YY_MM_DD)

for correct usage.

- Avoid applying excessive nozzle tip pressure.

TECHNICAL INFORMATION

Charger Electrical Ratings

Operating Voltage: 100 – 240 V~

Operating Frequency: 50 / 60 Hz

Power Consumption: 0.4 – 1.4 W

AirFloss Electrical Ratings

Battery Type: Lithium-Polymer

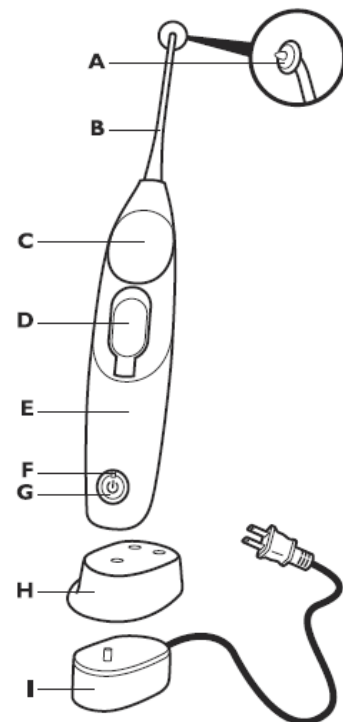
Voltage: 3.7 V

Capacity: 630 mAh

Power consumption: 6 W

REPAIR INSTRUCTIONS

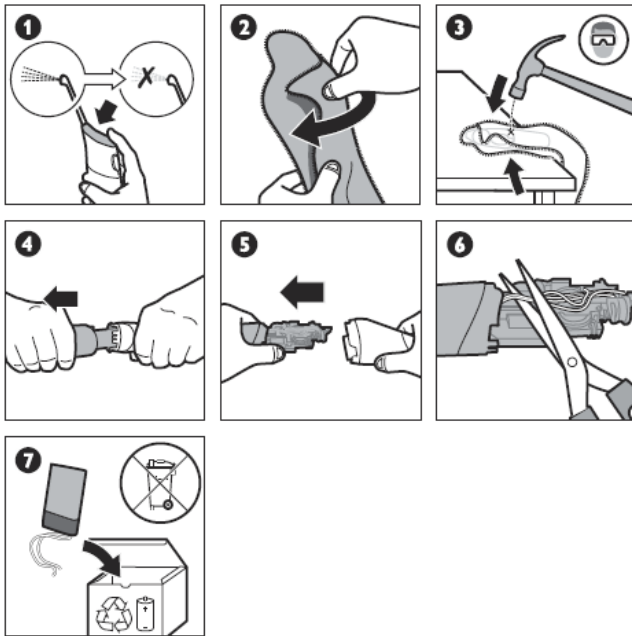
- Nozzle and Guidance tip (**pos A & B**)
In case of a defective Nozzle or tip, the complete Nozzle must be replaced.
- Water reservoir cover (**pos D**)
If the reservoir cover is lost or no longer closes, it can be replaced.
- Handle (**pos E**)
The batteries inside cannot be replaced. In case of a defect, the handle only must be replaced.
- Charging unit (**pos I**)
In case of a defective charging unit or cordset, the charger must be replaced. The charger that comes in the finished good configuration, as shown below, is not compatible with previous Sonicare toothbrush models. The AirFloss service charger is compatible with both previous Sonicare toothbrush models as well as the AirFloss handle. The AirFloss handle is compatible with previous FlexCare chargers but not DiamondClean or e-series chargers.
- Charging the handle (pos I)
The handle should be charged for at least 24 hours during the first few days of use.



ENVIRONMENT

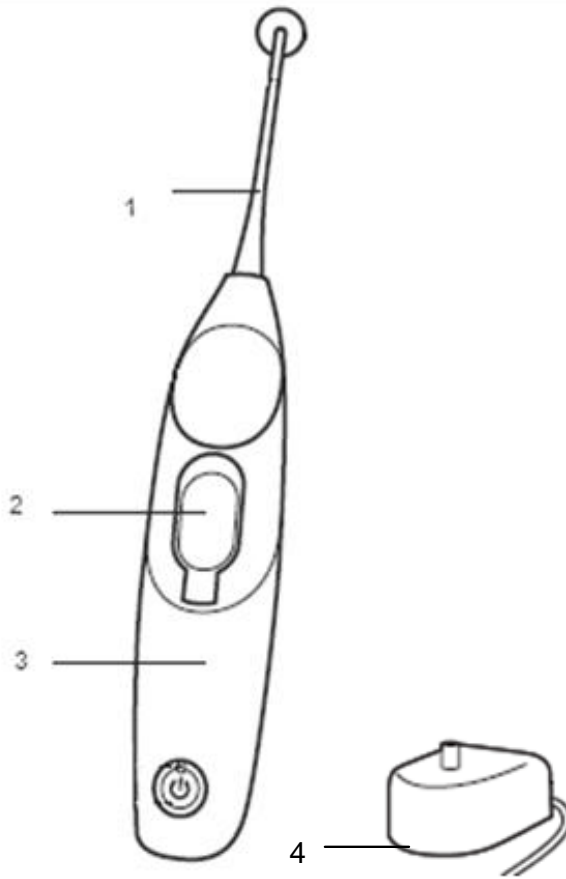
Removing the battery for recycling

Please note this process is not reversible - The rechargeable battery inside the AirFloss cannot be replaced but can be removed for recycling. Please contact your local waste management for recycling requirements. Only remove the battery at the end of the product's life. Doing so earlier will destroy the product. Deplete the battery charge by repeatedly pressing the activation button until AirFloss can no longer produce any bursts of air. Observe basic safety precautions.



HX8111, HX8181,
HX8141, HX8140
HX8211, HX8241,
HX8281, HX8240

Exploded View



**HX8111, HX8181,
HX8141, HX8140
HX8211, HX8241,
HX8281, HX8240**

**ALL REPLACEMENTS WILL BE AIRFLOSS1.5 PARTS
SERVICE AND WARRANTY PART NUMBERS**

SERVICE MANUAL - AirFloss 1.5

AirFloss 1.5 (HX8211, HX8241, HX8281, HX8240)

Pos	Service Code	Description	Comments
1	8818 012 23540	AIRFLOSS NOZZLE - US, CAN	Available as a Service part. Warranty claims should be routed to Call Centers.
	8818 012 07020	AIRFLOSS NOZZLE - UK & EUR	
	8818 012 05710	AIRFLOSS NOZZLE - CHINA	
	8818 012 06460	AIRFLOSS NOZZLE - KOIZUMI, YOSHIDA	
2	4235 020 59321	WATER RESERVIOR DOOR - US, EU	Available as a Service part
	4235 090 04421	WATER RESERVIOR DOOR - ALL OF ASIA	
3	4235 090 04341	HANDLE ONLY - US & CANADA	Not available as a Service Part. Only available as warranty. Handle warranty claims must be routed to Call Centers for replacement.
	4235 090 04351	HANDLE ONLY -UK & EUR	
	4235 090 04361	HANDLE ONLY - REST OF ASIA	
	4235 090 04371	HANDLE ONLY - CHINA	
	4235 090 04381	HANDLE ONLY - JAPAN	
4	4235 010 18931	TRAVEL CHARGER - US, CANADA	Available as a Service part. Warranty claims should be routed to Call Centers.
	4235 010 18941	TRAVEL CHARGER – EUR, UAE, SOUTH AFRICA	
	4235 010 18951	TRAVEL CHARGER – UK	
	4235 090 03611	TRAVEL CHARGER - JAPAN KOIZUMI	
	4235 090 03601	TRAVEL CHARGER - JAPAN YOSHIDA	
	4235 090 02581	TRAVEL CHARGER - AUSTRALIA	
	4235 090 03661	TRAVEL CHARGER - TAIWAN	
	4235 090 02571	TRAVEL CHARGER - PHILIPINES, MALAYSIA, SINGAPORE, HONG KONG	
	4235 090 02531	TRAVEL CHARGER - CHINA	
4235 090 02551	TRAVEL CHARGER - SOUTH KOREA		